

SERIE 9000/750

HORIZONTAL SHOWCASES



CIAM

Refrigeration solutions
with a design focus.



Serie 900/750

The 900-750 series consists of modular refrigerated, warm and neutral display cabinets available in 6 lengths, 3 corner models, 2 depths (900 and 750) and 11 types of glass gantries. Serie900-750 is characterized by a lowered display compartment in order to have a large loading capacity. The timeless style of these showcases allows designers to easily insert this type of showcase into any design and stylistic context.



Channeled modular snack showcase

- | | | | | | | | | | |
|---|---|--|--|--|--|--|--|--|--|
| 
Fresh pastry | 
Cold deli products | 
Sandwich | 
Packed meat | 
Cheese and dairy products | 
Cured meats | 
Chocolate | 
Bread | 
Hot deli products | 
Ice-cream |
| 
Frozen pastry | 
Brioche | 
Fruits and vegetables | 
Salad | 
Pizza | 
Milk | 
Beverage | | | |

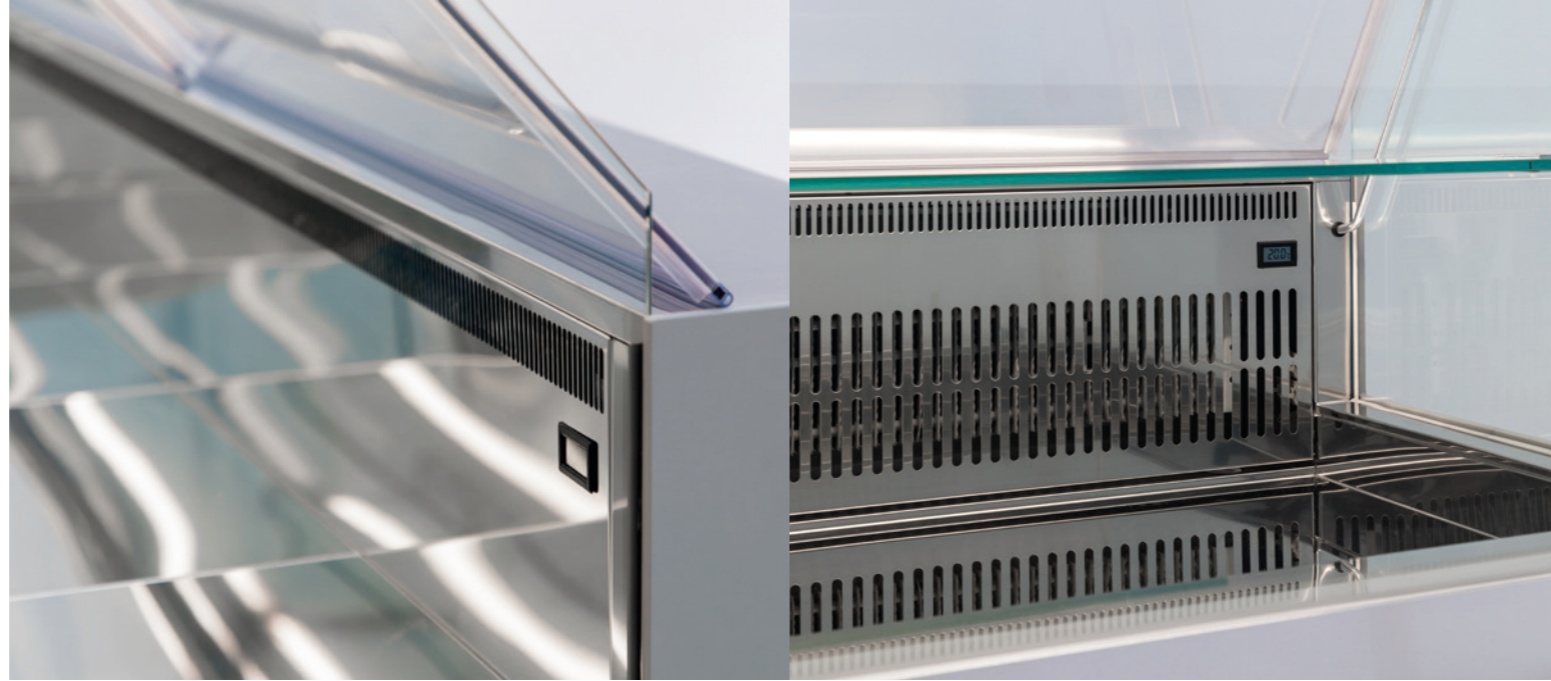
[Watch the videos](#)



Versatility and timeless style



Refrigeration



Ventilated refrigeration

Static refrigeration

Refrigeration at positive temperature and low temperature for ice-cream

Serie900 showcases can have positive refrigeration (+4°) or low temperature (-18°) for ice-cream and semifreddo.

Humidity control (Opt.)

On request it is possible to have humidity control, especially for pralines display.

Evaporator with cataphoretic treatment

All cooling units are cataphoresis-treated and guarantee maximum hygiene as the copper pipes and aluminum fins have no rough surfaces.

Ecological gas R290

The positive-temperature refrigerated modules are equipped with a built-in cooling unit using eco-friendly gas R290.

Refrigerated storage module (Opt.)

On request, it is possible to provide an additional refrigerated module.

Automatic electric defrosting (Opt.)

On request, the positive temperature refrigerated display cabinets can be fitted with electric defrosting, which speeds up defrosting times and prevents ice formation in the evaporator.

Positive-temperature and low-temperature modules.



Heated pan for evaporation of condensation water (Opt.)

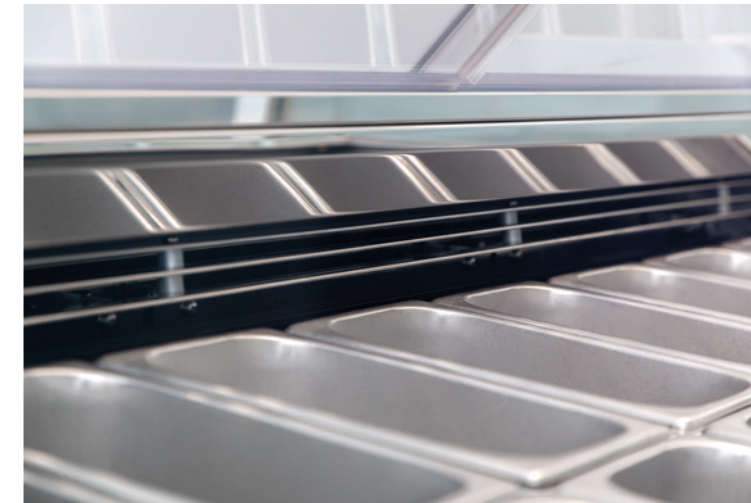
The showcases can be equipped with a condensate evaporator pan with electric resistances, if it is not possible to connect the water drainage system to the room drainage system.

Reverse-cycle defrosting

All low-temperature models have ultra-rapid reverse cycle defrosting as standard.

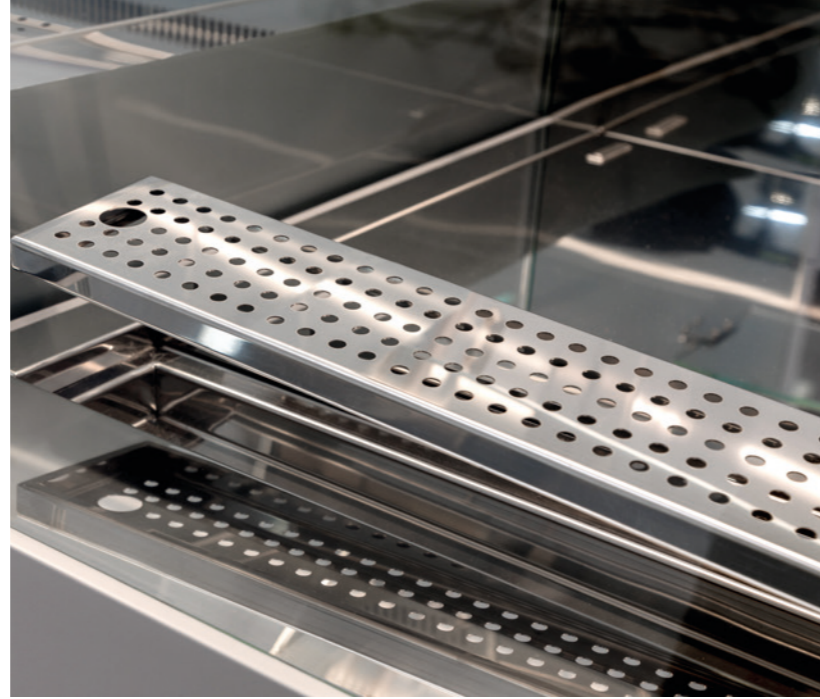


Ecological gas R290



Low-temperature showcases with reverse cycle defrosting

Heated showcases



Humid heat with induction (Opt.)



Dry-warm showcases

Dry-warm showcases

Dry-warm showcases have a steel plate heated by electric resistances.

Bain-marie warm showcases

Bain-marie warm showcases have an internal tank with rounded internal edges and designed to house GN trays.

Humid heat with induction (Opt.)

On request, the dry-warm cabinets can be equipped with a water pan loaded manually for the natural addition of humidification.

Bain-marie warm and dry-warm modules



Perforated trays (Opt.)

On request, the bain-marie warm showcases can be equipped with perforated steel trays, instead of GN trays.

Heated shelf (Opt.)

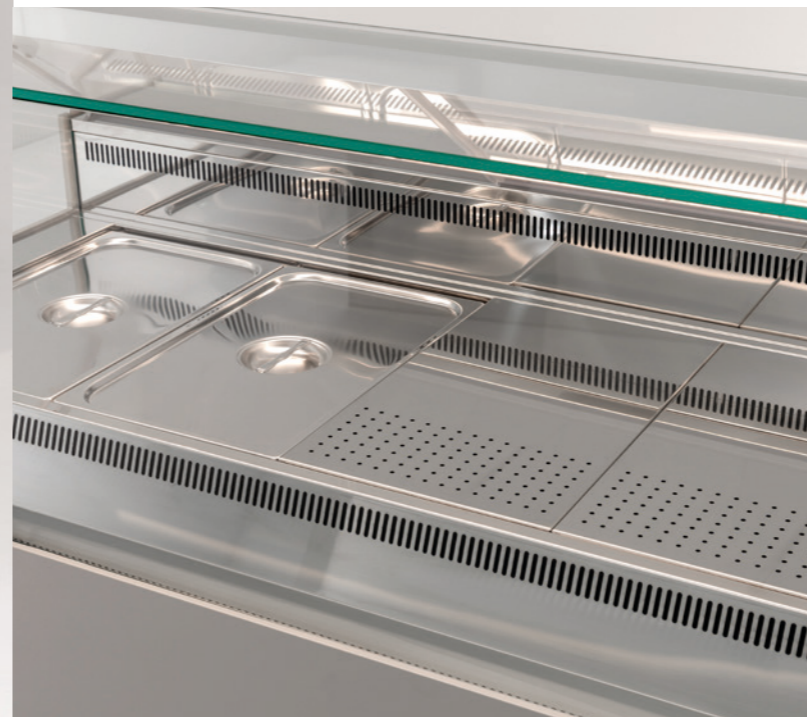
On request, the Serie900-750 showcases can be equipped with heated shelf in laminated glass.

Heating lamp (Opt.)

On request, Serie900-750 heated showcases can be equipped with infrared halogen heating lamp.



Bain-marie warm showcases



Bain-marie modules are designed to house GN trays or perforated plates



Heated glass sides



Sliding doors

Shelves

Glass shelves are fixed on two chrome-plated shelf supports.

Ceiling light

The ceiling light has 3000°K no-spot LED strips.

Shelf with built-in lighting (Opt.)

On request, shelves can be supplied with built-in light fixture.

Sliding doors

Access to the refrigerated compartment is via PETG sliding doors with perimeter gaskets.

Heated glass sides

All refrigerated showcases have heated glass sides as standard.



Shelf with built-in lighting (Opt.)

Chrome-plated shelf supports

Heated glass for ice-cream showcases

All gelato showcases have front heated NoFog glass.

Glass air baffle

Refrigerated showcases are equipped with glass air baffle.

Mirror finish for side (Opt.)

On request, sides can be mirrored through a painting process.



Micro-ceiling light



S2 glass gantry



C3 glass gantry



R4 UP glass gantry

R4 glass gantry

Glass gantry with mechanical fastening.

R4 UP glass gantry

Glass gantry with mechanical fastening and upper glasses that can be opened with micro-hinges.

TS glass gantry

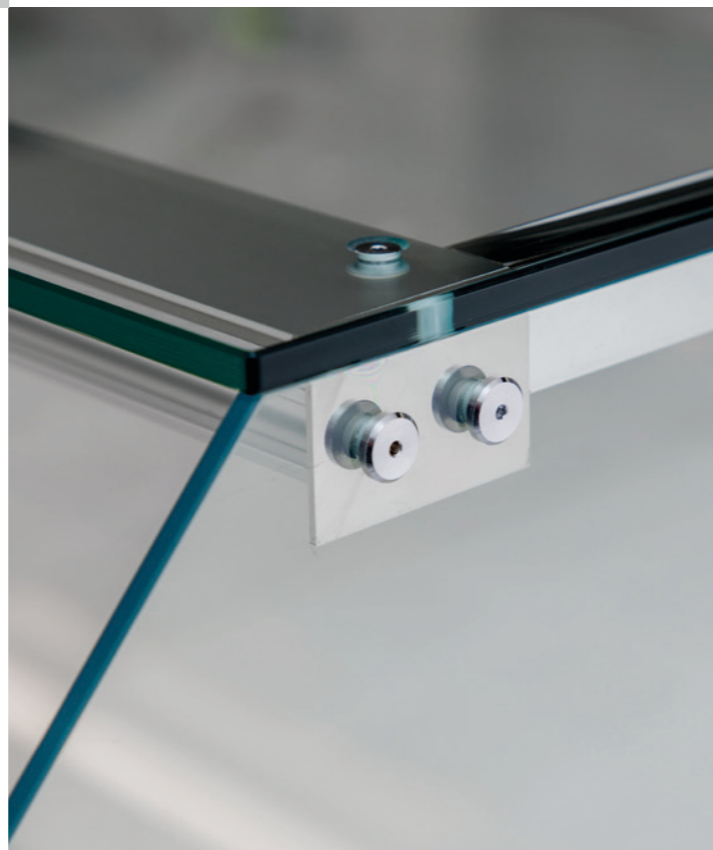
UV glued glasses (ultraviolet).

S2 glass gantry

Glass gantry with polished aluminum horizontal profiles and mullions, downward-opening front glass, intermediate shelves with ceiling light.

C3 glass gantry

Glass gantry with downward-opening, curved front glass.



R4 glass gantry - Fixed glass gantry with mechanical fastening

CIAM CONNECT



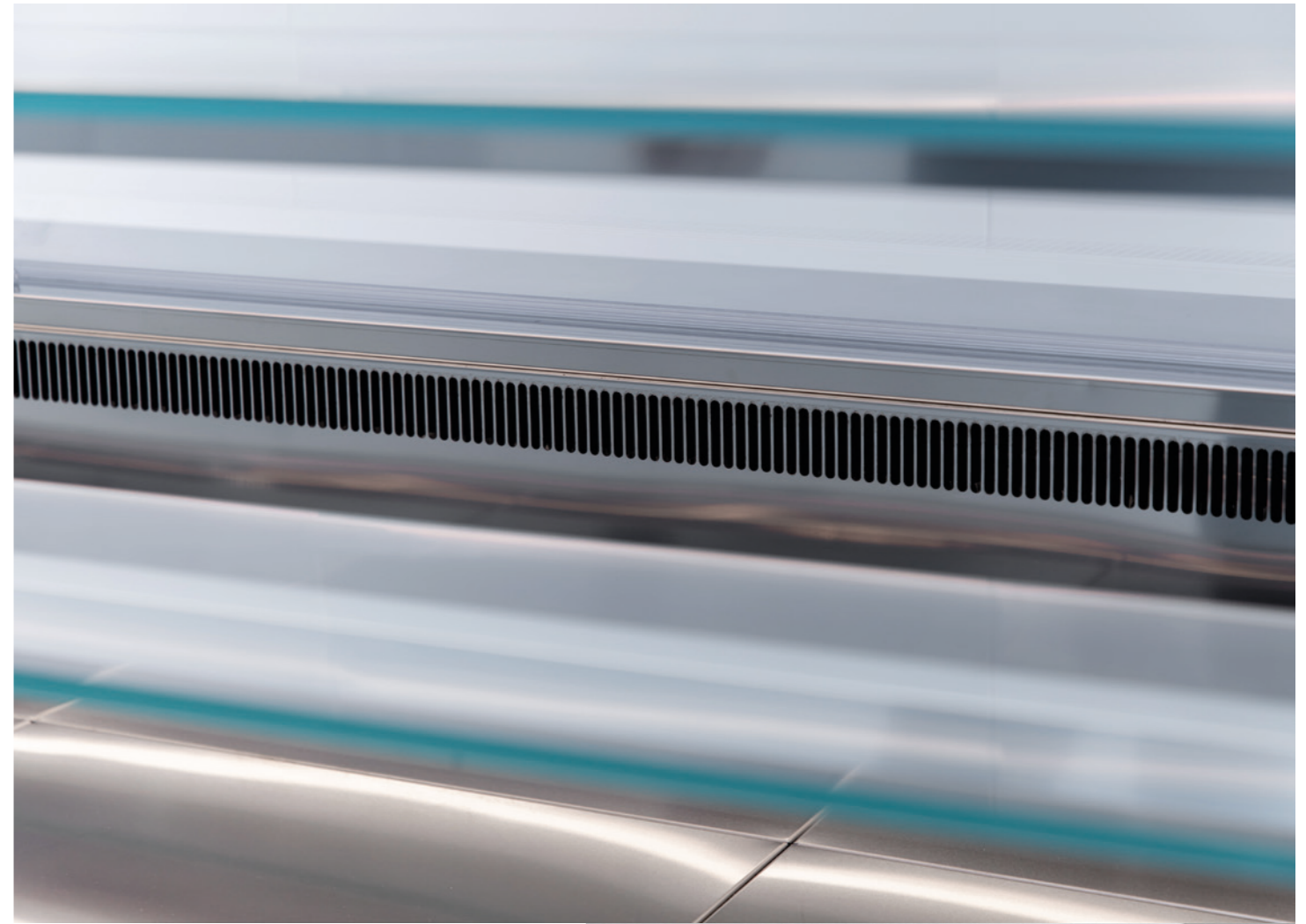
1. Connectivity

The device allows remote control of the showcase thanks to connectivity with a Sim card that does not require wi-fi or a connection to the premises data.



2. Remote control

Through the Cloud portal you can interact with the showcase, by downloading the operating graphics, monitoring alarms and product performance directly online.



Refrigeration with low consumption electronic fans



Digital control panel

Touch Panel

The elegant touch control panel is fitted as standard on all models.

Low consumption electronic fans

Ventilated refrigerated showcases are equipped with low consumption electronic fans.



Hardware and profiles in coordinated style and polished finish

Hardware and profiles

The profiles and hardware of the entire series have been designed with a unique and minimalist style, most are made of steel with micro-cast molds with a glossy std finish or powder-coated on request (opt).

Channeling showcases

The 900-750 Series showcases are designed to be channeled in continuity. This is possible even between showcases with different uses and temperatures.

Monolithic tanks

The monolithic tanks are insulated with water-based ecological polyurethane.

Large exhibition space

Serie900-750 is characterized by a lowered display compartment, in order to have a large loading capacity.

Paneling kit

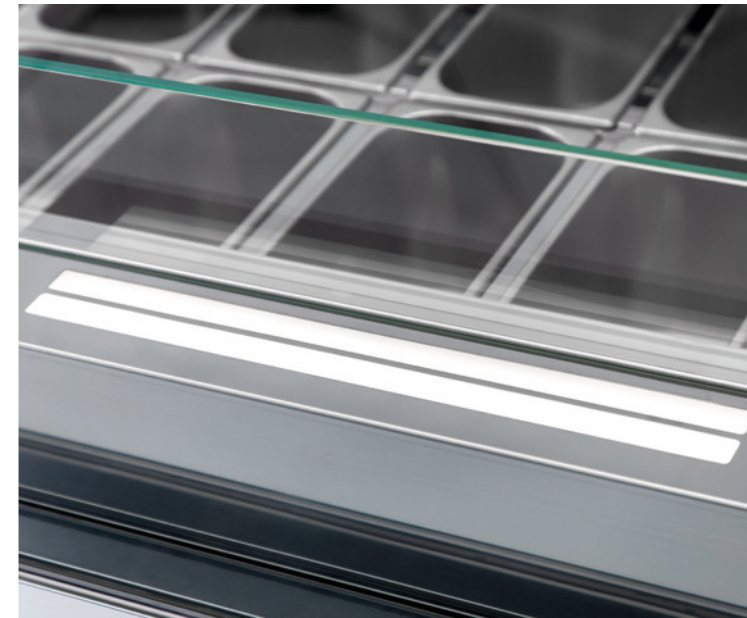
On request, the showcases can be equipped with a front and side paneling in pure HPL or painted HPL.

Kit of casters



Channeling showcases

HPL paneling kit



Monolithic tanks



Kit of casters

TS H1200



TS H1350



TSB H1200



S2 H1200



Serie 900

R4 H1200



R4 H1350



S2 H1350



C3 H1320



R4UP H1200



R4UP H1350



TSB H1200



TS H1200



TS H1350



Serie 750

R4 H1200



R4 H1350



R4UP H1200



R4UP H1350



	TS H1200	TS H1350	R4 H1200	R4 H1350	R4 UP H1200	R4 UP H1350	TSB	S2 H1200	S2 H1350	C3
GLASSES OPENING	UV glued glasses	UV glued glasses	Glasses with mechanical fastening	Glasses with mechanical fastening	Upward-opening top glass with micro-hinges	Upward-opening top glass with micro-hinges	Downward-opening glass gantry	Downward-opening front glass	Downward-opening front glass	Curved downward-opening front glass
FRONT GLASS	UV glued glass with glass air baffle	UV glued glass with glass air baffle	Glass gantry with glass air baffle	Glass gantry with glass air baffle	Glass gantry with glass air baffle	Glass gantry with glass air baffle	UV glued glass with glass air baffle	Glass air baffle	Glass air baffle	Glass air baffle
SIDE GLASSES	Heated glass	Heated glass	Heated glass	Heated glass	Heated glass	Heated glass	Heated glass	Heated glass	Heated glass	Heated glass
N. SHELVES	1 fixed shelf	2 fixed shelves	1 fixed shelf	2 fixed shelves	1 fixed shelf	2 fixed shelves	1 fixed shelf	1 fixed shelf	2 fixed shelves	2 fixed shelves
OPERATOR SIDE OPENING	PETG sliding doors with perimeter gaskets	PETG sliding doors with perimeter gaskets	PETG sliding doors with perimeter gaskets	PETG sliding doors with perimeter gaskets	PETG sliding doors with perimeter gaskets	PETG sliding doors with perimeter gaskets	PETG sliding doors with perimeter gaskets	PETG sliding doors with perimeter gaskets	PETG sliding doors with perimeter gaskets	PETG sliding doors with perimeter gaskets
STRIP-LED DIFFUSED LIGHTING	3000° K (Std) 2700° K (Opt) 4000° K (Opt)	3000° K (Std) 2700° K (Opt) 4000° K (Opt)	3000° K (Std) 2700° K (Opt) 4000° K (Opt)	3000° K (Std) 2700° K (Opt) 4000° K (Opt)	3000° K (Std) 2700° K (Opt) 4000° K (Opt)	3000° K (Std) 2700° K (Opt) 4000° K (Opt)	3000° K (Std) 2700° K (Opt) 4000° K (Opt)	3000° K (Std) 2700° K (Opt) 4000° K (Opt)	3000° K (Std) 2700° K (Opt) 4000° K (Opt)	3000° K (Std) 2700° K (Opt) 4000° K (Opt)
PROFILES FINISHES	Polished aluminum (Std) RAL powder-coated (Opt) Electroplated (Opt)	Polished aluminum (Std) RAL powder-coated (Opt) Electroplated (Opt)	Polished aluminum (Std) RAL powder-coated (Opt) Electroplated (Opt)	Polished aluminum (Std) RAL powder-coated (Opt) Electroplated (Opt)	Polished aluminum (Std) RAL powder-coated (Opt) Electroplated (Opt)	Polished aluminum (Std) RAL powder-coated (Opt) Electroplated (Opt)	Polished aluminum (Std) RAL powder-coated (Opt) Electroplated (Opt)	Polished aluminum (Std) RAL powder-coated (Opt) Electroplated (Opt)	Polished aluminum (Std) RAL powder-coated (Opt) Electroplated (Opt)	Polished aluminum (Std) RAL powder-coated (Opt) Electroplated (Opt)
HARDWARE FINISHES	Chrome-plated (Std) RAL (Opt)	Chrome-plated (Std) RAL (Opt)	Chrome-plated (Std) RAL (Opt)	Chrome-plated (Std) RAL (Opt)	Chrome-plated (Std) RAL (Opt)	Chrome-plated (Std) RAL (Opt)	Chrome-plated (Std) RAL (Opt)	Chrome-plated (Std) RAL (Opt)	Chrome-plated (Std) RAL (Opt)	Chrome-plated (Std) RAL (Opt)
LINEAR MODELS	•	•	•	•	•	•	•	•	•	•
AP90° SQ MODEL	•	•	•	•	•	•	-	•	•	-
AP90° SF MODEL	•	•	•	•	-	-	-	•	•	•

	TEMPERATURE	P 750	P 900	CORNER AP90° SQ SX	CORNER AP90° SQ DX	CORNER AP90° SF	GAS	L1000	L1250	L1500	L2000	L2500	L3000	WORKTOP	DISPLAY AREA
STATIC REFRIGERATED	+4° C						Linear R290 Corner R452A	•	•	•	•	•	•	Polished s/s (Std) Polished s/s Acrylic HPL Gres Stone Marble (Opt)	Polished s/s (Std) Polished s/s Powder coated s/s Acrylic HPL Gres Stone Marble (Opt)
VENTILATED REFRIGERATED	+4° C						Linear R290 Corner R452A	•	•	•	•	•	•	Polished s/s (Std) Polished s/s Acrylic HPL Gres Stone Marble (Opt)	Polished s/s (Std) Polished s/s Powder coated s/s Acrylic HPL Gres Stone Marble (Opt)
STATIC REFRIGERATED WITH DRAWERS	+4° C	-		-	-	-	R452A	•	-	•	•	-	-	Polished s/s (Std) Polished s/s Acrylic HPL Gres Stone Marble (Opt)	Polished s/s (Std)
ICE-CREAM	-18° C	-		-	-	-	R452A		-			-	-	Polished s/s (Std) Polished s/s Acrylic HPL Gres Stone Marble (Opt)	Polished s/s (Std)
DRY-WARM Humid heat with induction kit	+80° C			-	-	-	-	•	-	•	•	-	-	Polished s/s (Std) Polished s/s Acrylic HPL Gres Stone Marble (Opt)	Polished s/s (Std)
BAIN-MARIE WARM	+80° C			-	-	-	-	3x GN 1/1 	-	4x GN 1/1 	(3+3) x GN 1/1 	-	-	Polished s/s (Std) Polished s/s Acrylic HPL Gres Stone Marble (Opt)	Arrangement GN trays (Std) GN trays kit (Opt) Polished steel perforated trays (Opt)
BREAD	Ambient temperature	-		-	-	-	-	•	•	•	•	-	-	Polished s/s (Std) Polished s/s Acrylic HPL Gres Stone Marble (Opt)	Drawer in solid wood staves (Std)
NEUTRAL	Ambient temperature						-	•	•	•	•	•	•	Polished s/s (Std) Polished s/s Acrylic HPL Gres Stone Marble (Opt)	Polished s/s (Std)

CIAM